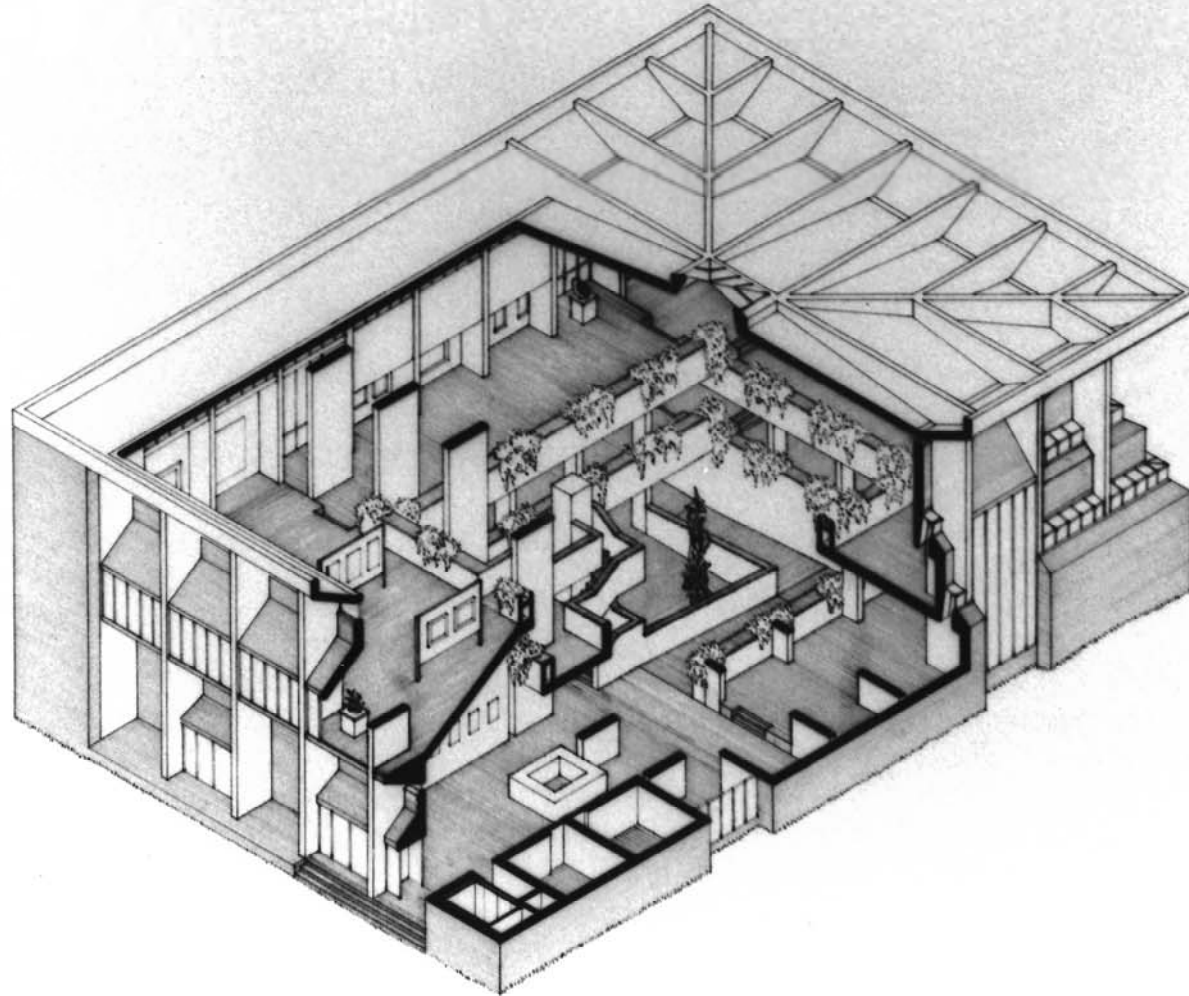


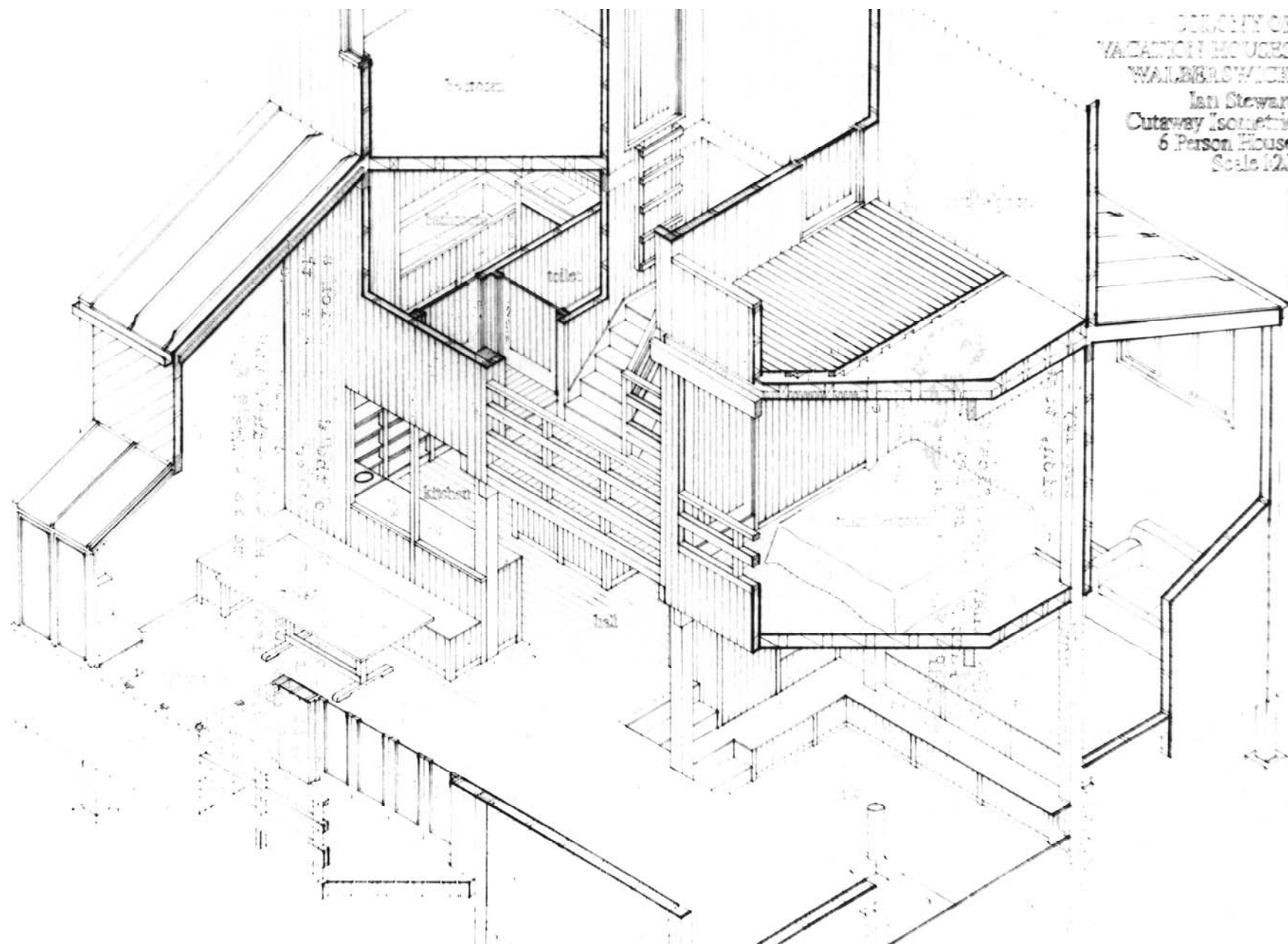
The 1970s

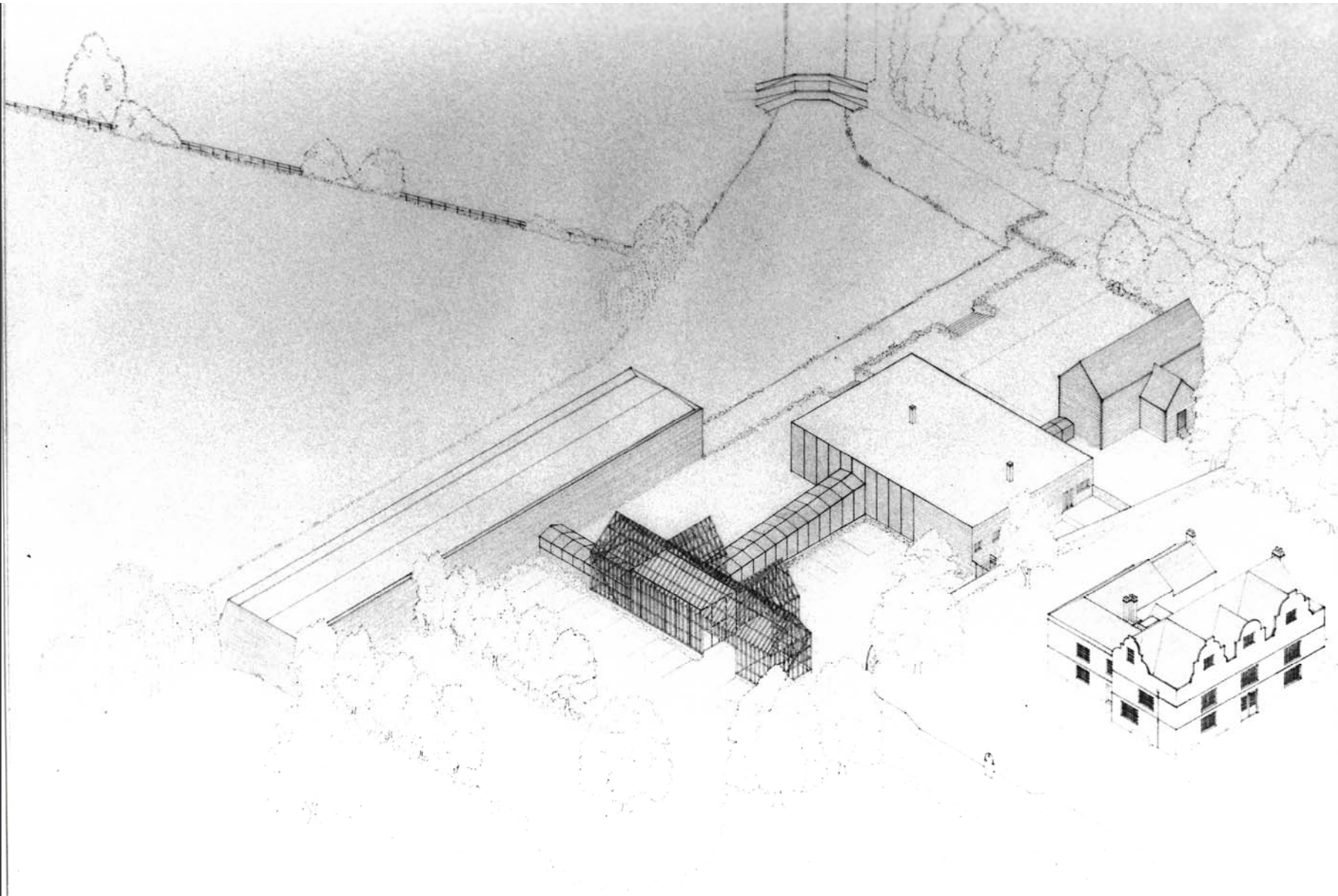
Ian Stewart 1975-78

MUSEUM OF MODERN ART  
SNAPE SUFFOLK  
Ian Stewart  
Scale 1:100  
Cutaway Isometric



DESIGN OF  
VACATION HOUSES  
WALBRIDGE  
Ian Stewart  
Outaway Isometric  
6 Person House  
Scale 1/2"

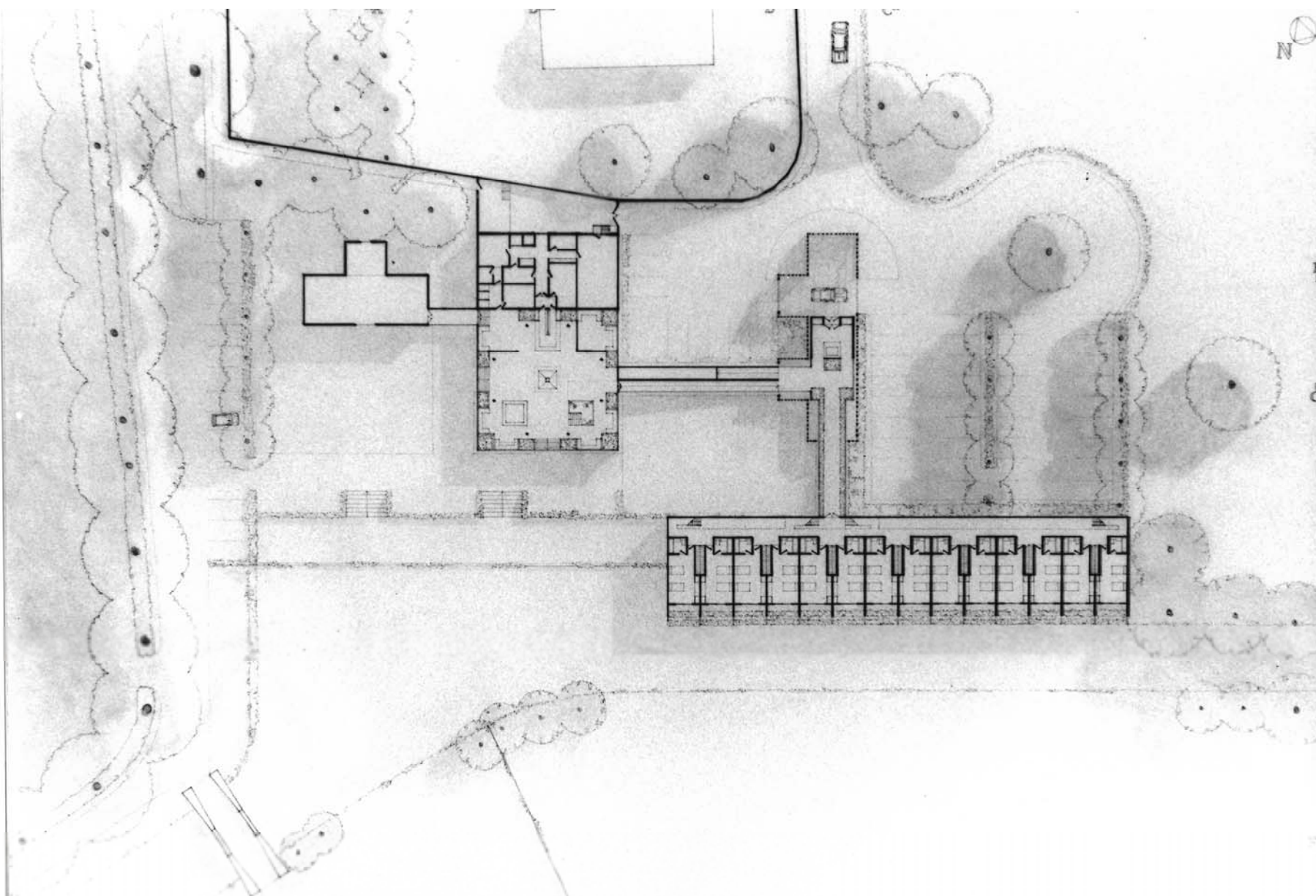




AZCARKBTRHC 004731600

HOTEL AND RESIDENCES

IAN STEWARD - JAN 78

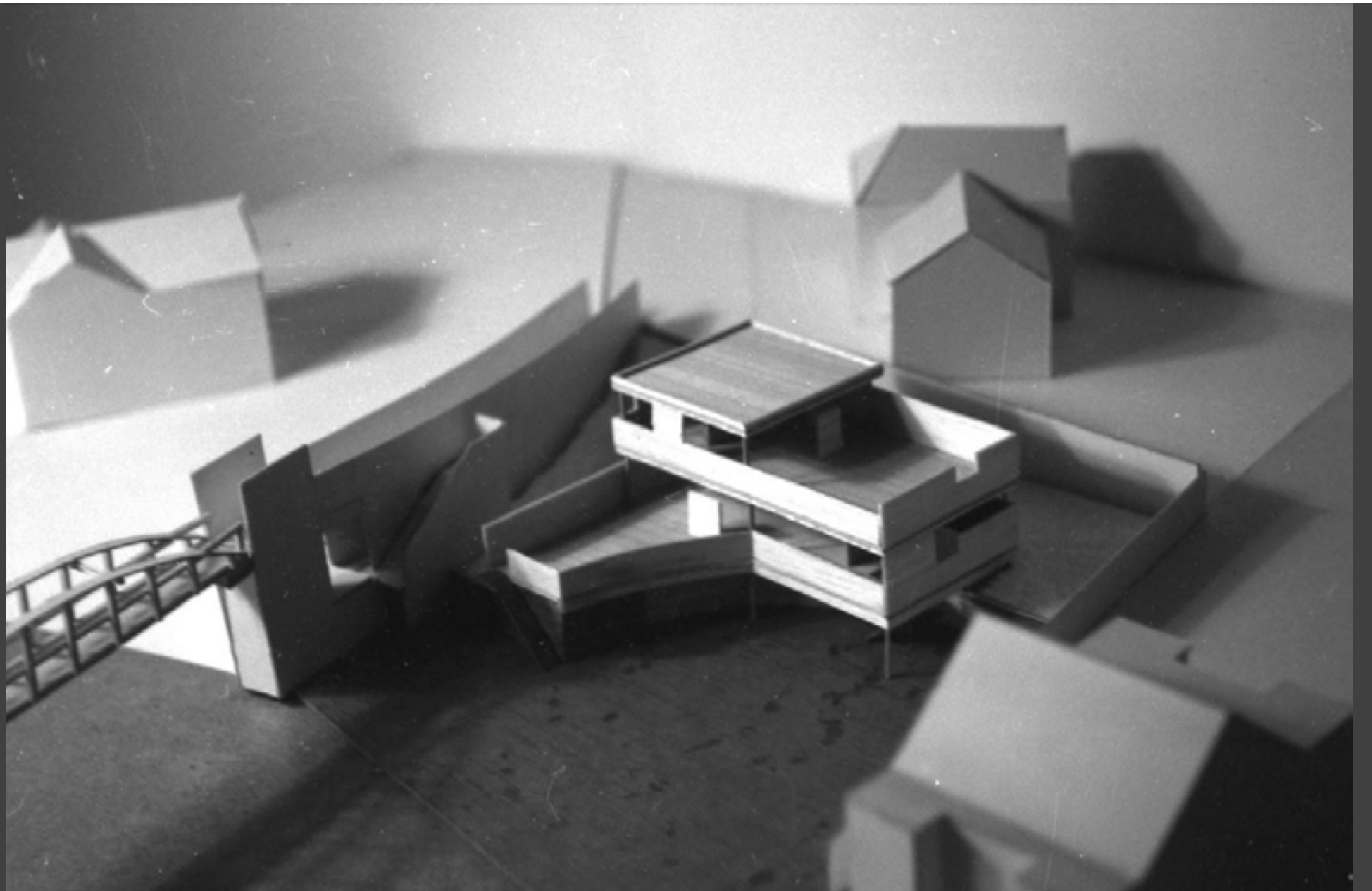


GROUND FLOOR PLAN - SCALE 1/800

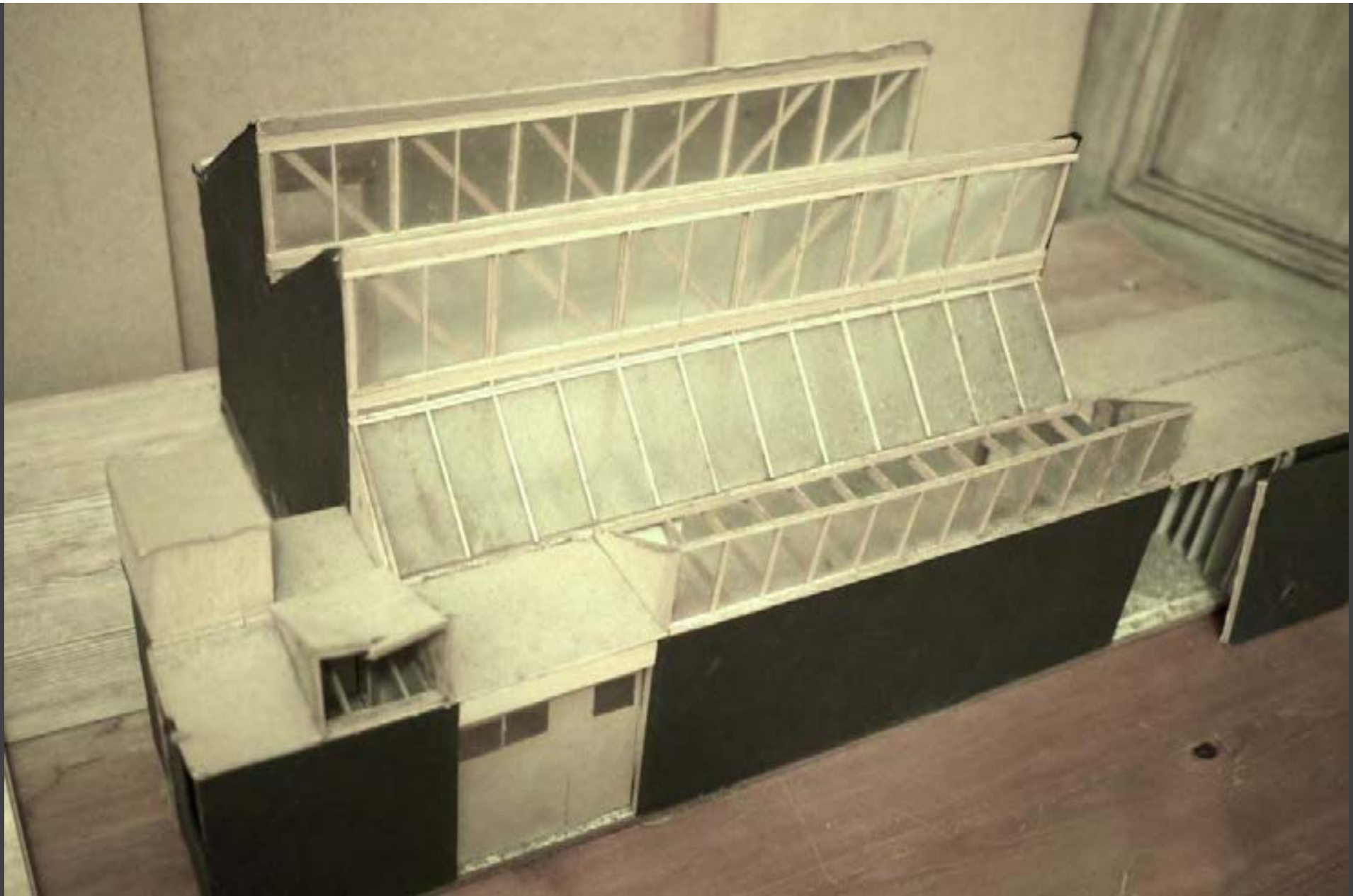
HOTEL AT FEN DITTON

LIN STEWART 1910

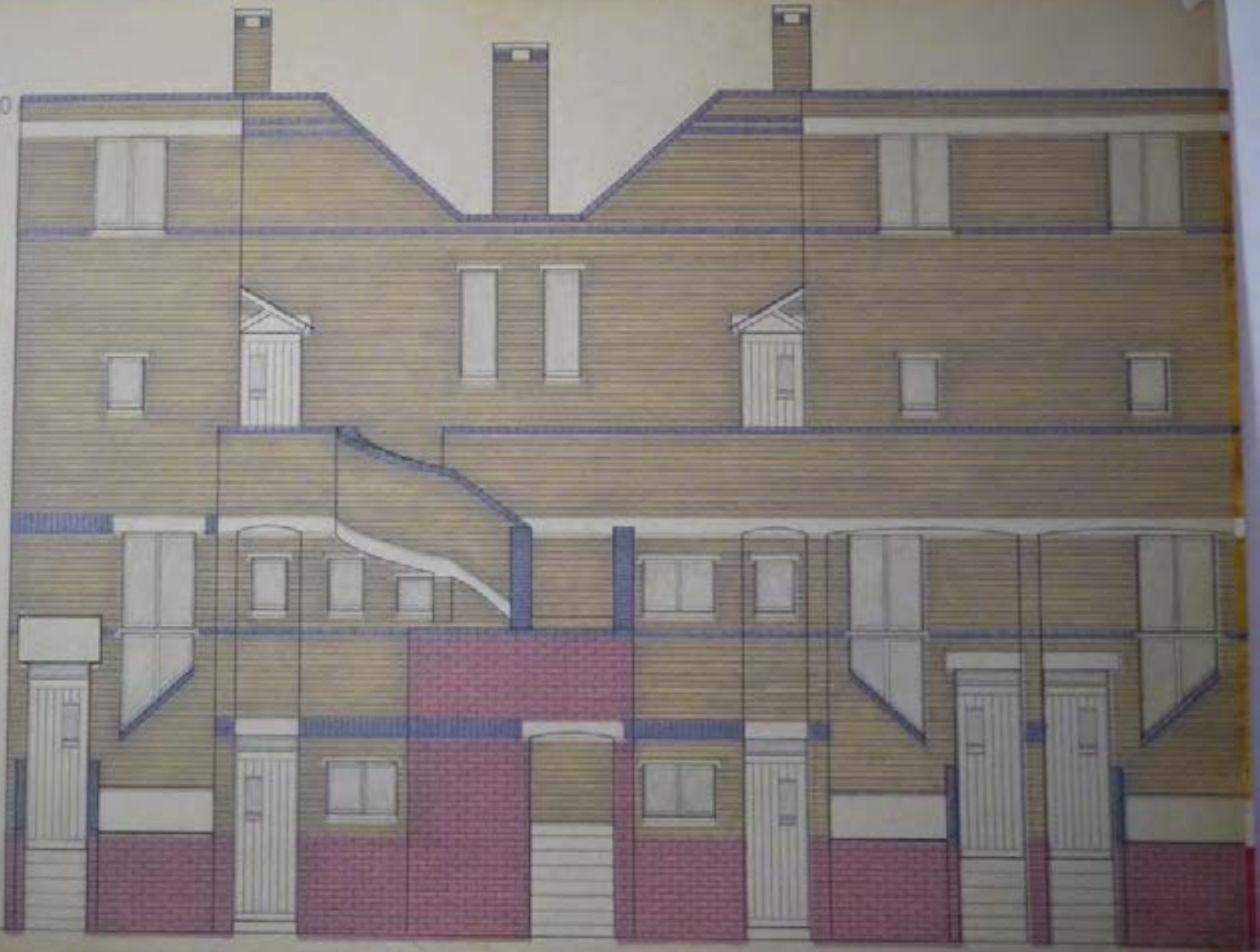
Paul Barham 1976-79

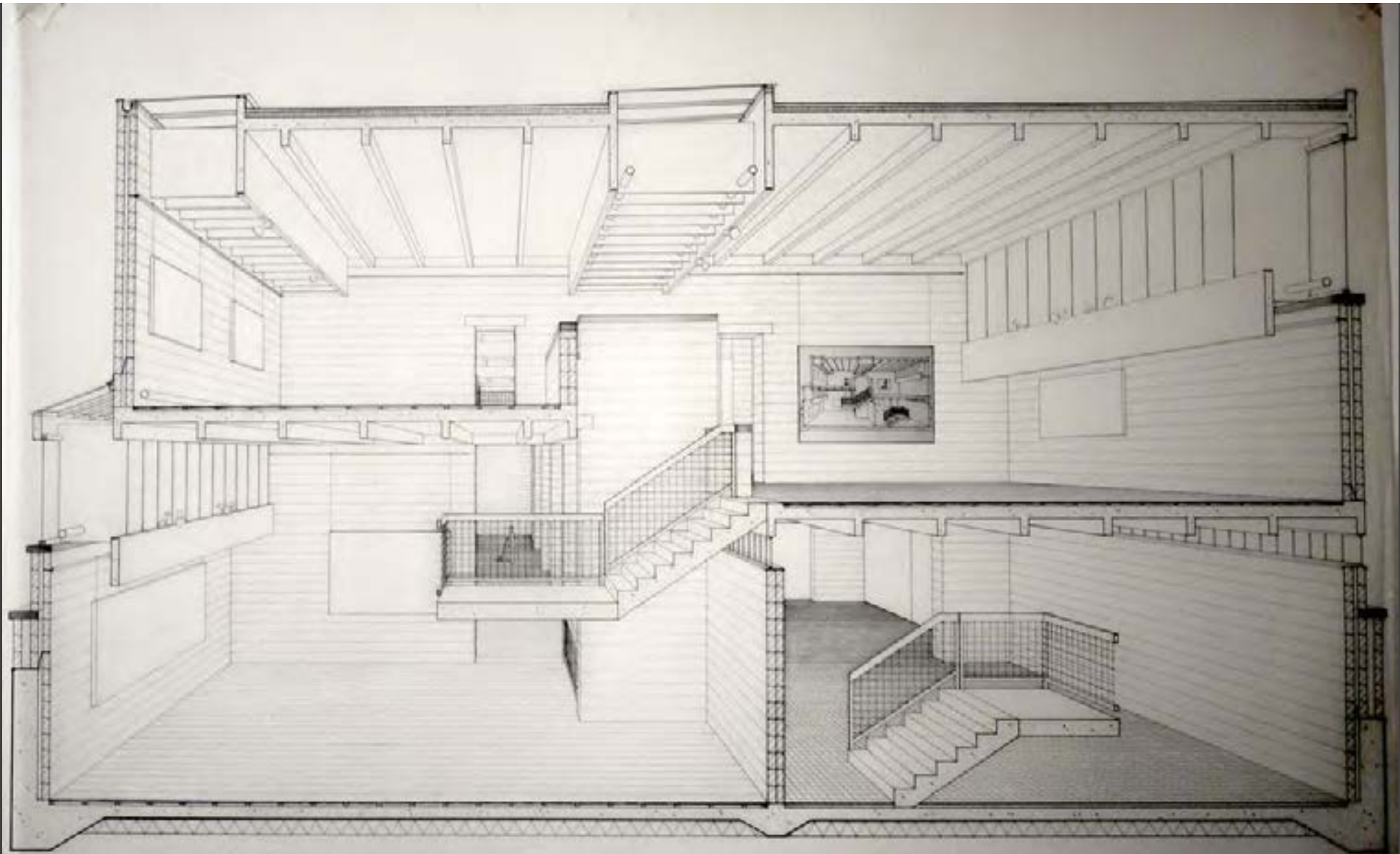




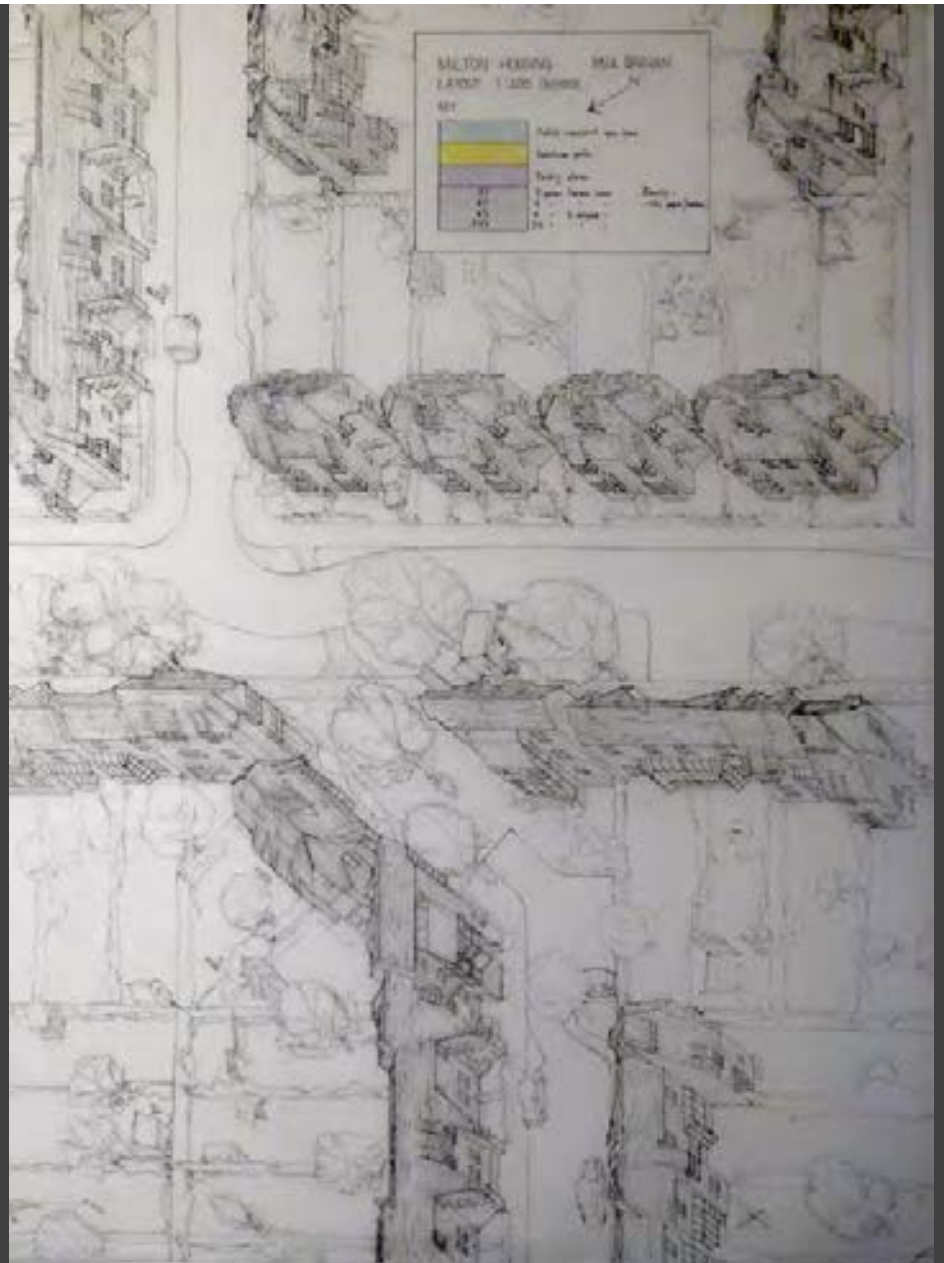
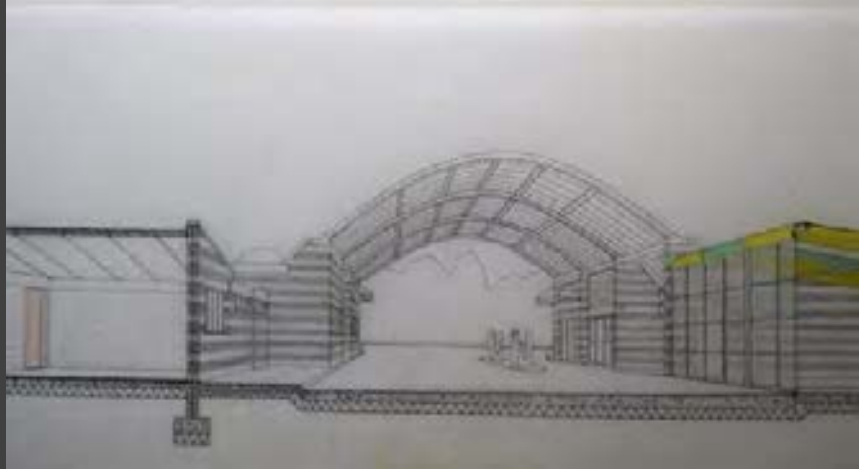
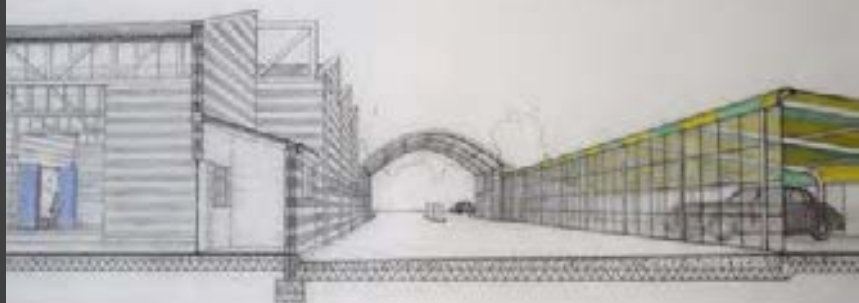


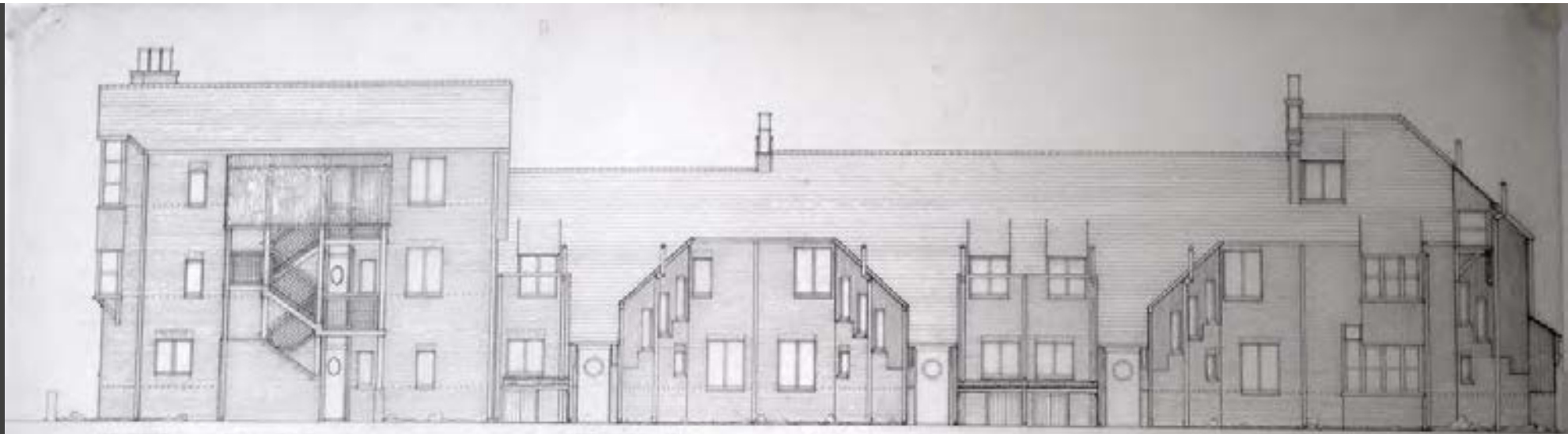
ELEVATION 1-20





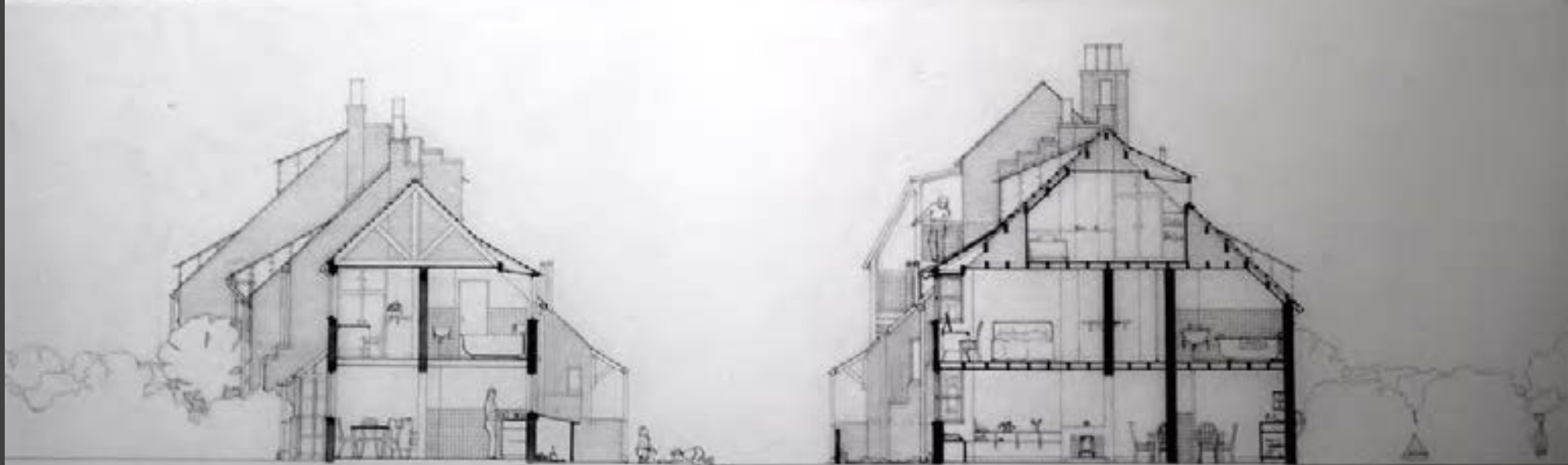
ART GALLERY SECTION 1/20





WEST FRONT - 1/4 SECTION - 1911      1/2 SECTION - 1911      1/4 SECTION - 1911      1/4 SECTION - 1911      1/4 SECTION - 1911

EDDINGTON - 1911



SECTION - 1911      SECTION - 1911

David Billingsley 1976-79



St. John's Litchford  
from Trinity Street

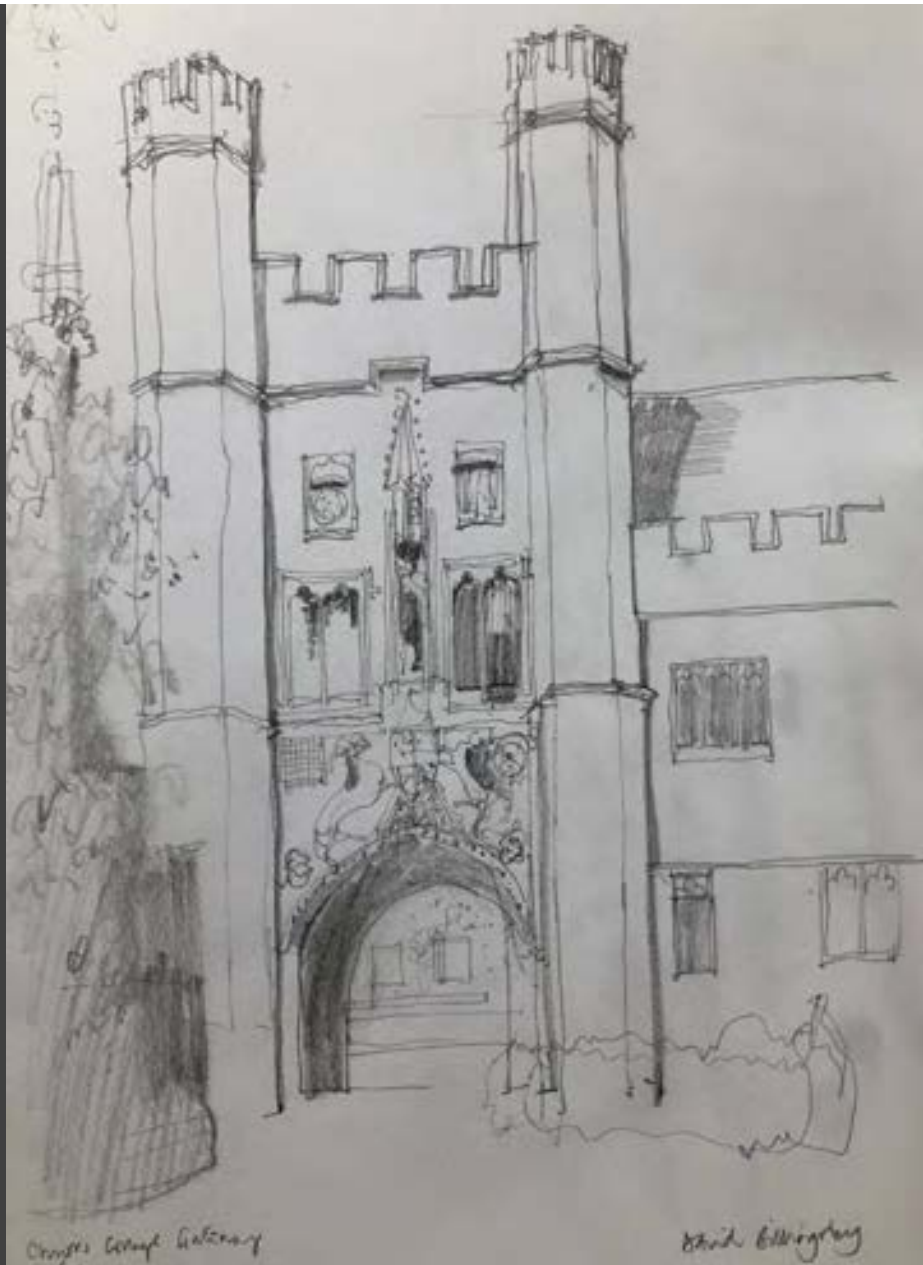
David Wainwright



Great Gate  
Trinity House 1519-20  
David Thompson







Jeremy Lander 1976-79











The wall is covered with various architectural posters and diagrams. On the left, a poster titled "ENCLOSURES" features a purple and green diagram. In the center, a large poster shows a complex diagram with blue and red lines and the text "VARIETY: HOW TO USE MULTI-BLACK AND WHITE". To the right, a poster titled "COORDINATE SYSTEM" shows a grid of red lines. Other posters include a blue grid, a diagram with a wavy line, and a poster with a blue and black geometric design. A small poster with a grid of colored squares is visible in the bottom right corner.









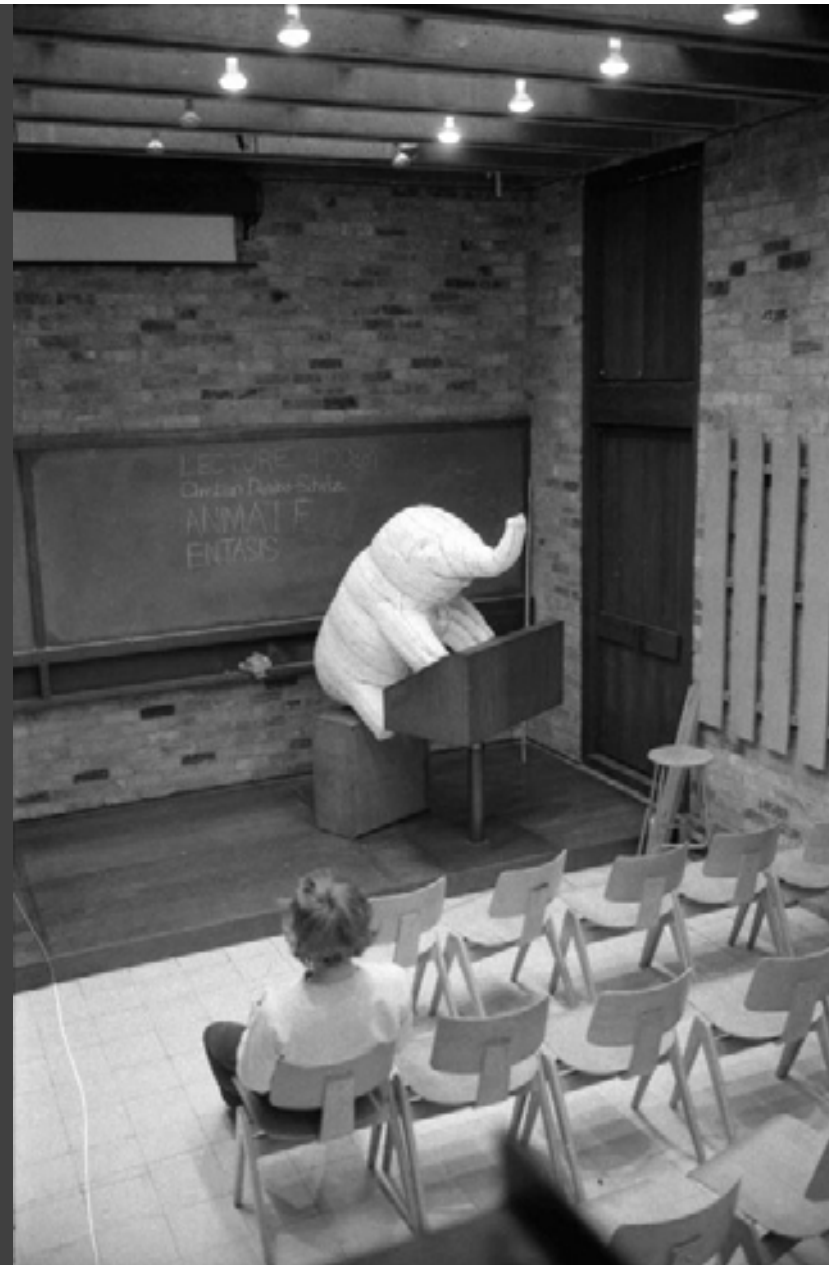




























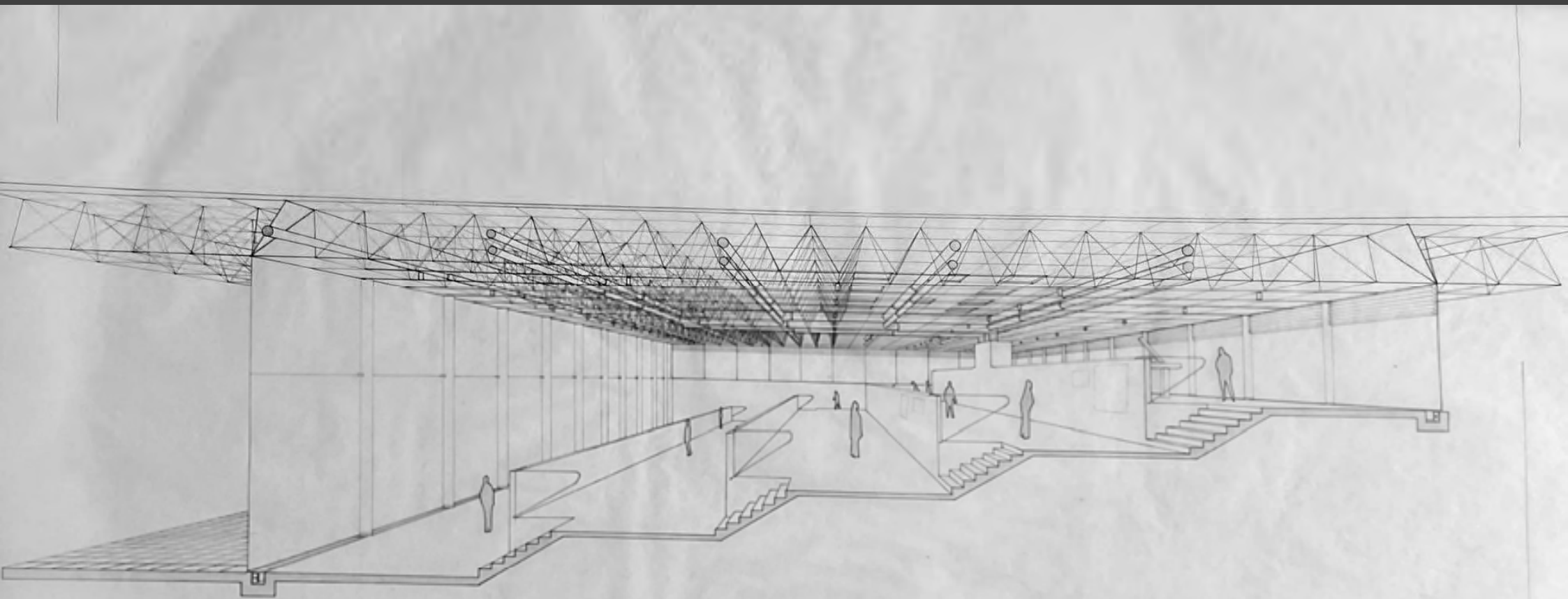








Paul Baxter 1977-80





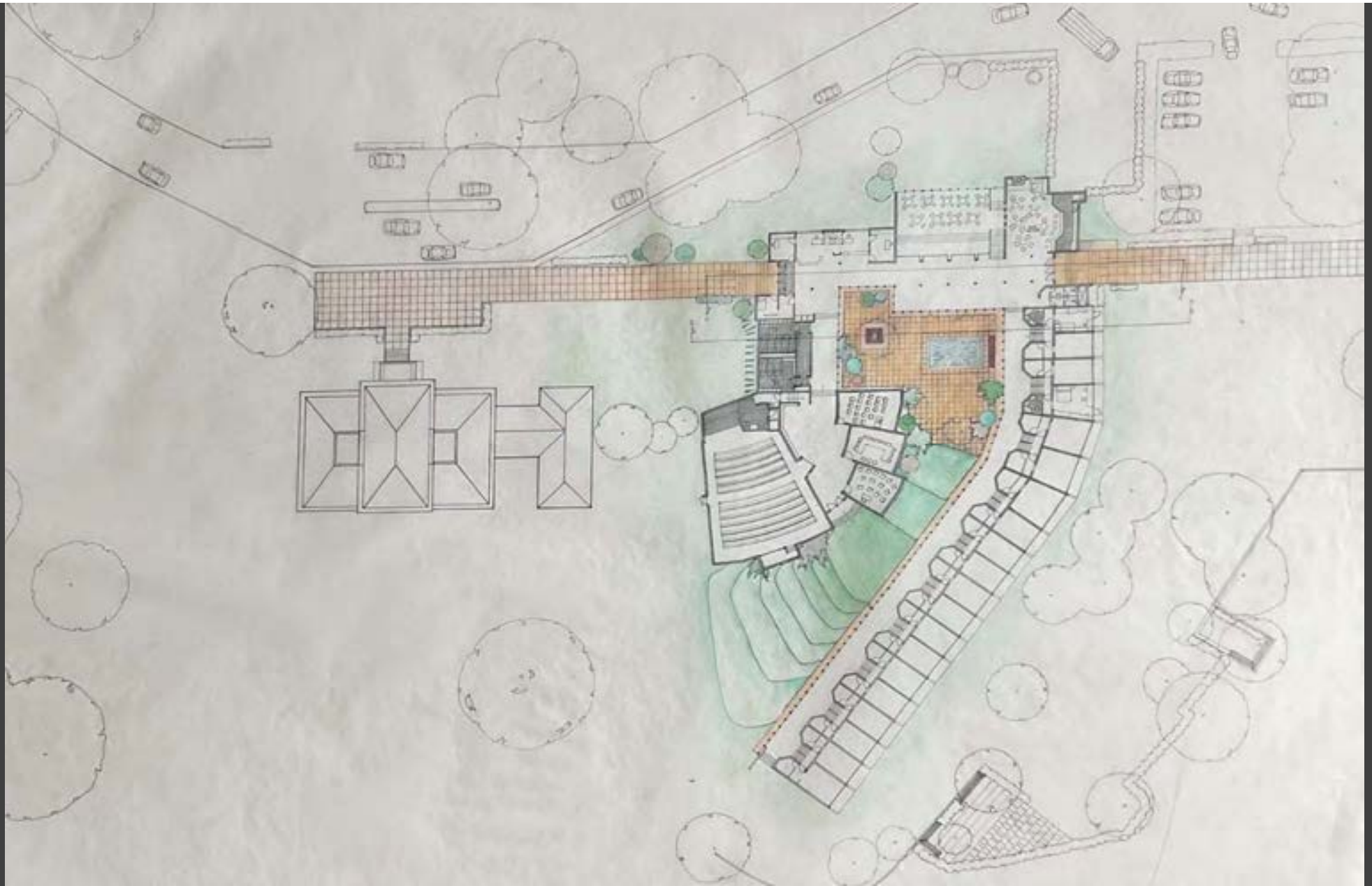
West Elevation

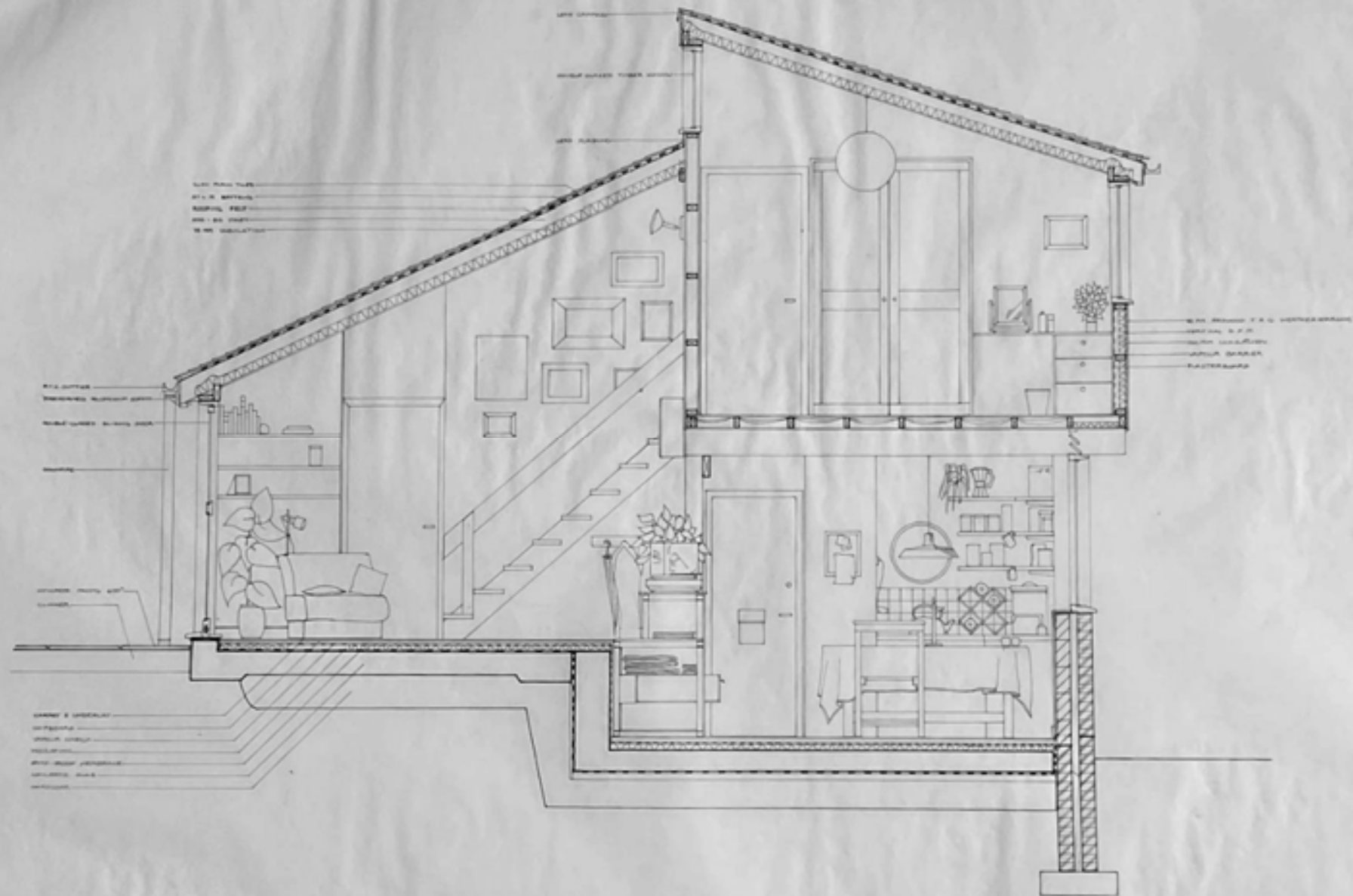


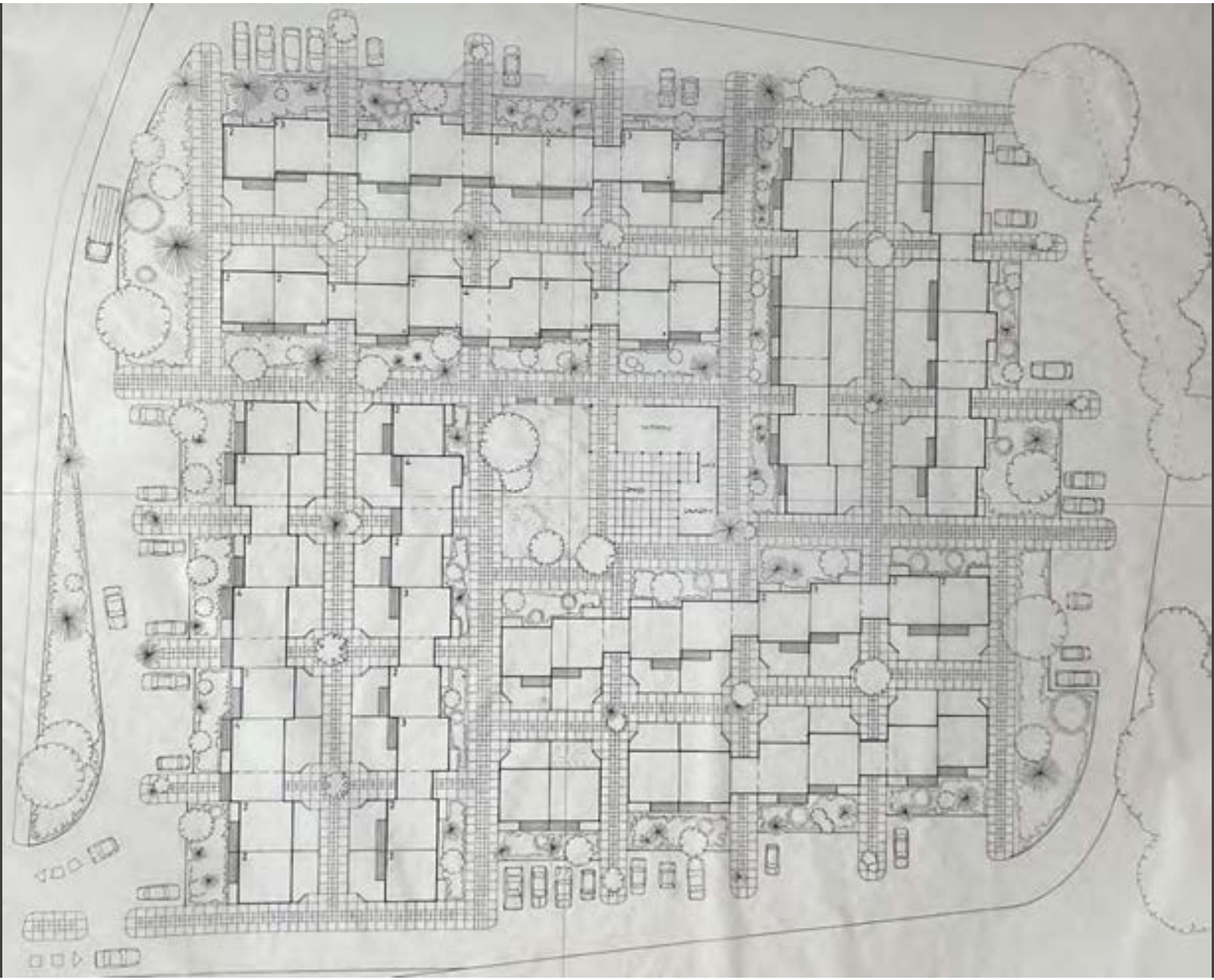
Section AA



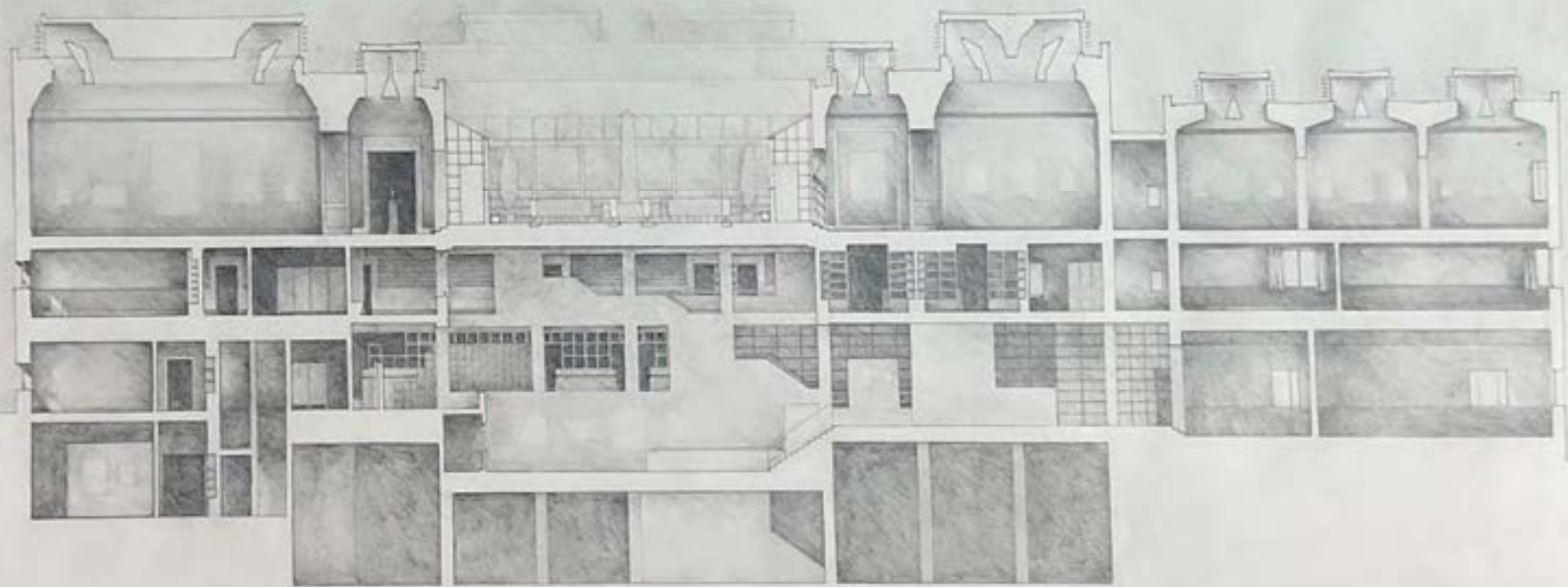
Section BB



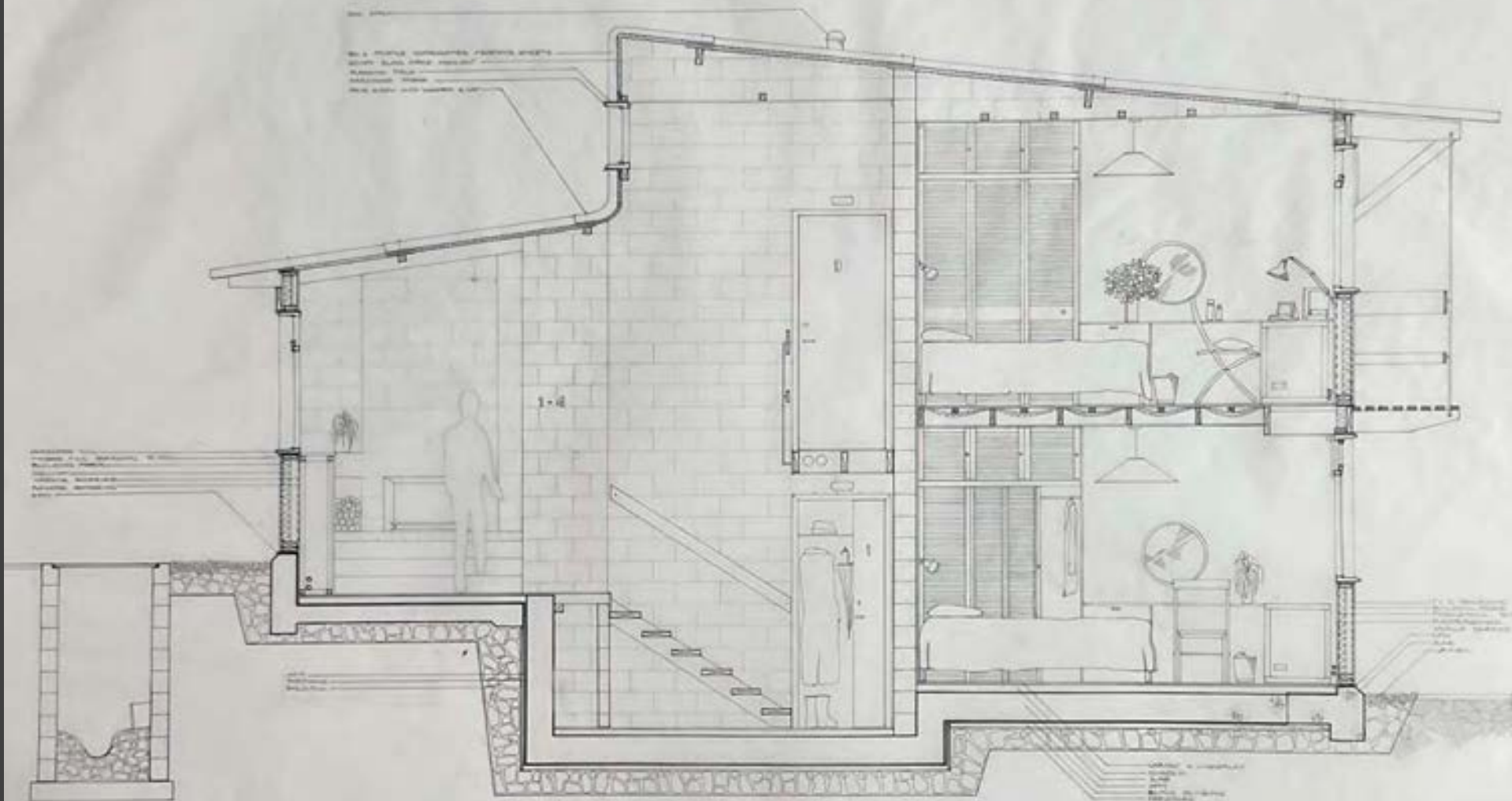






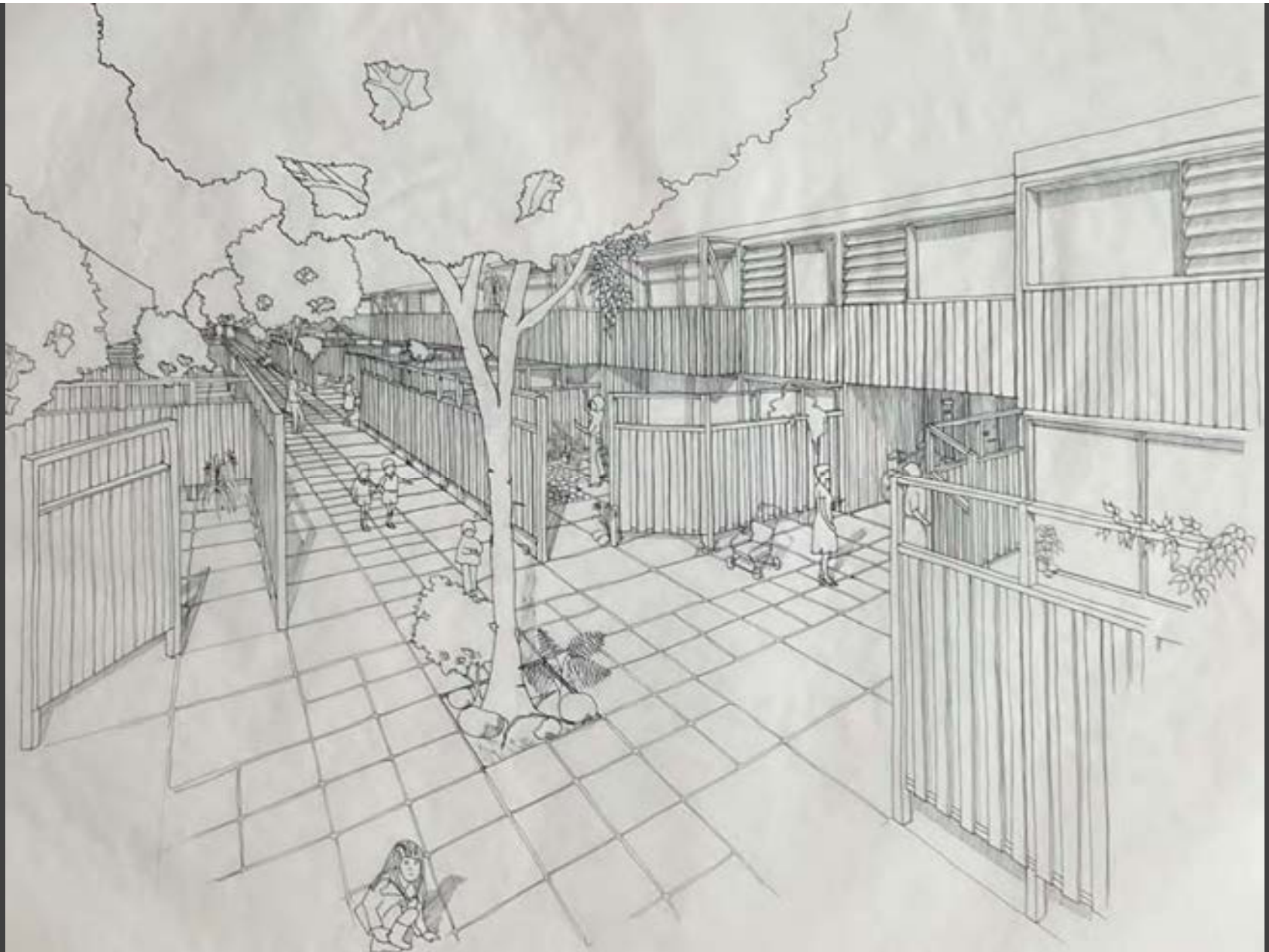


SECTION XX





SECTION AA





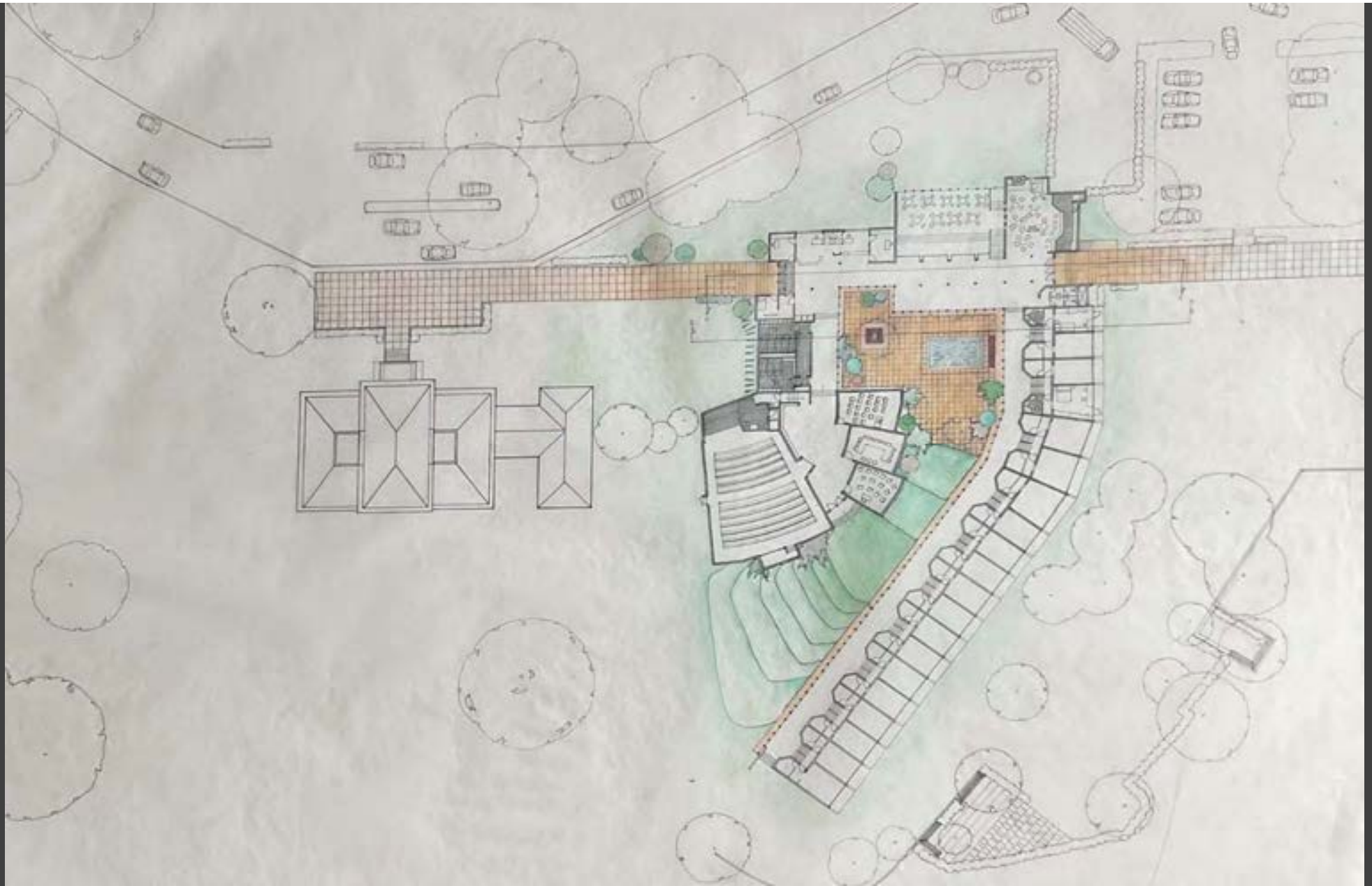
West Elevation

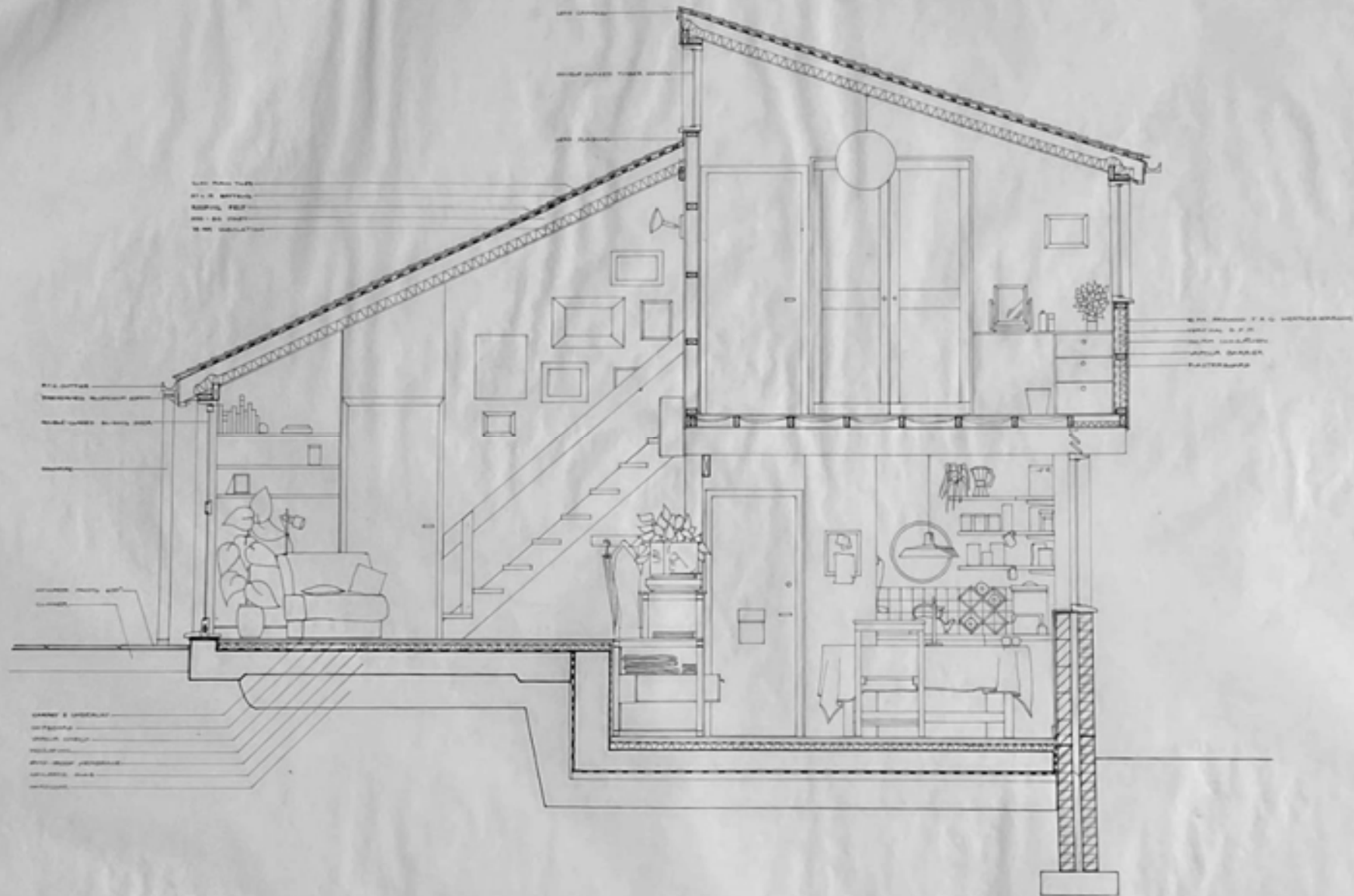


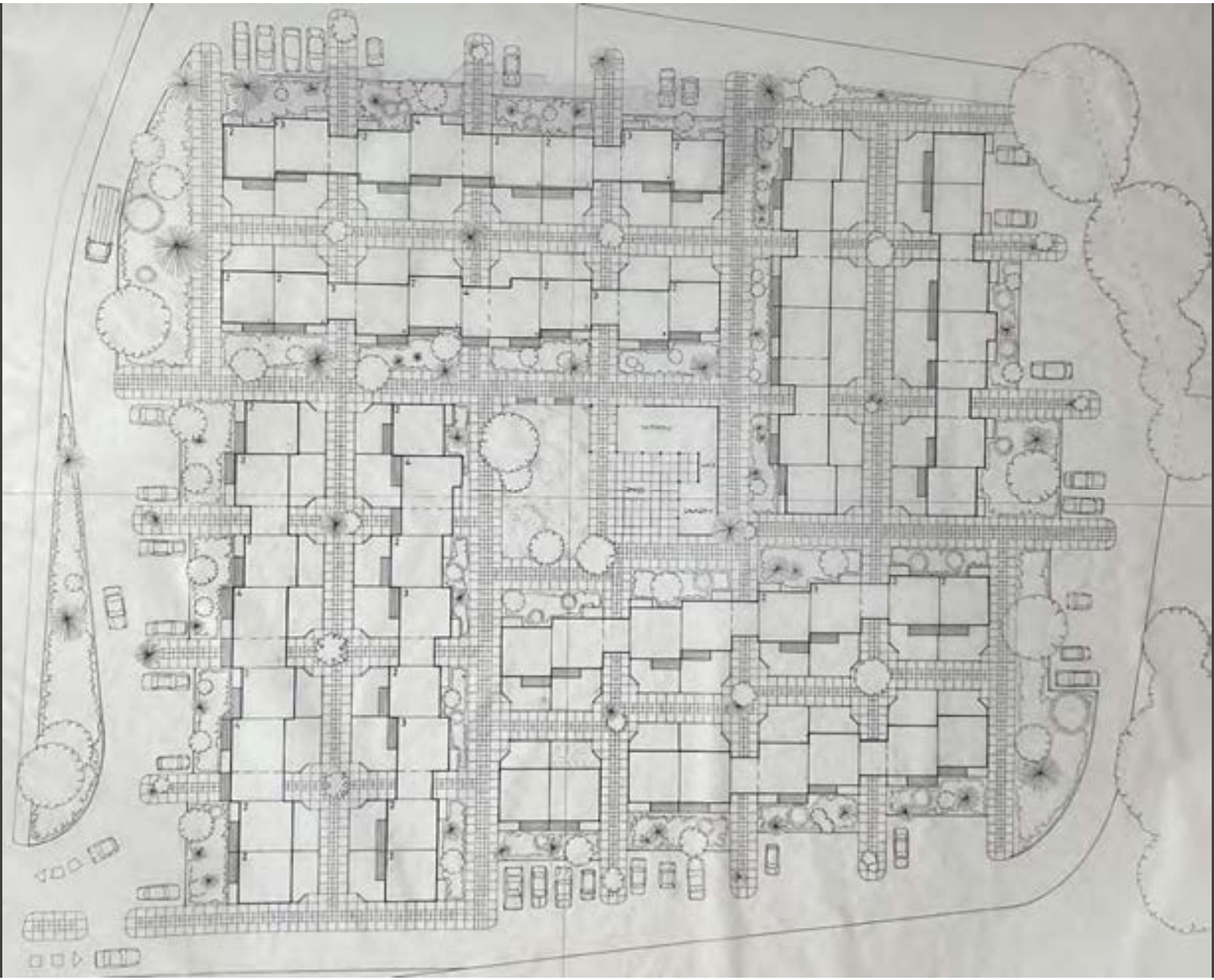
Section AA



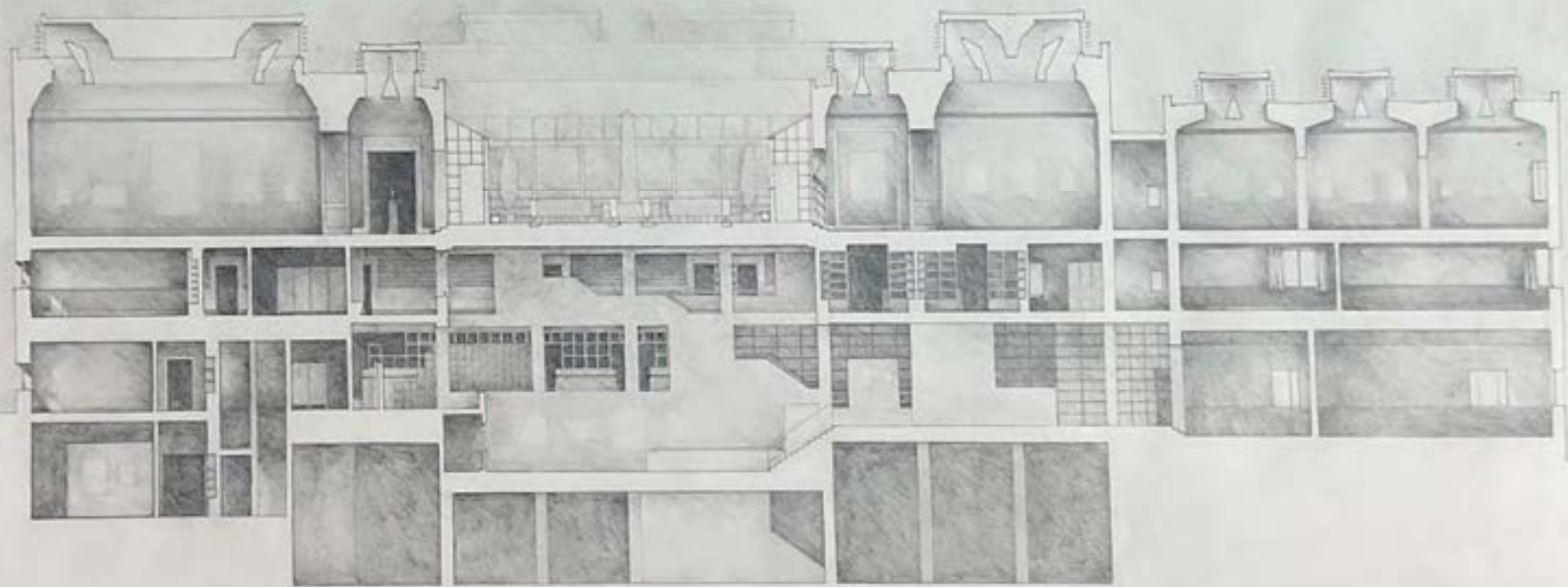
Section BB











SECTION XX 1-1911





Cambridge University



School of Architecture

3<sup>rd</sup> Year

1979/80



Faden Lilley

Cambridge