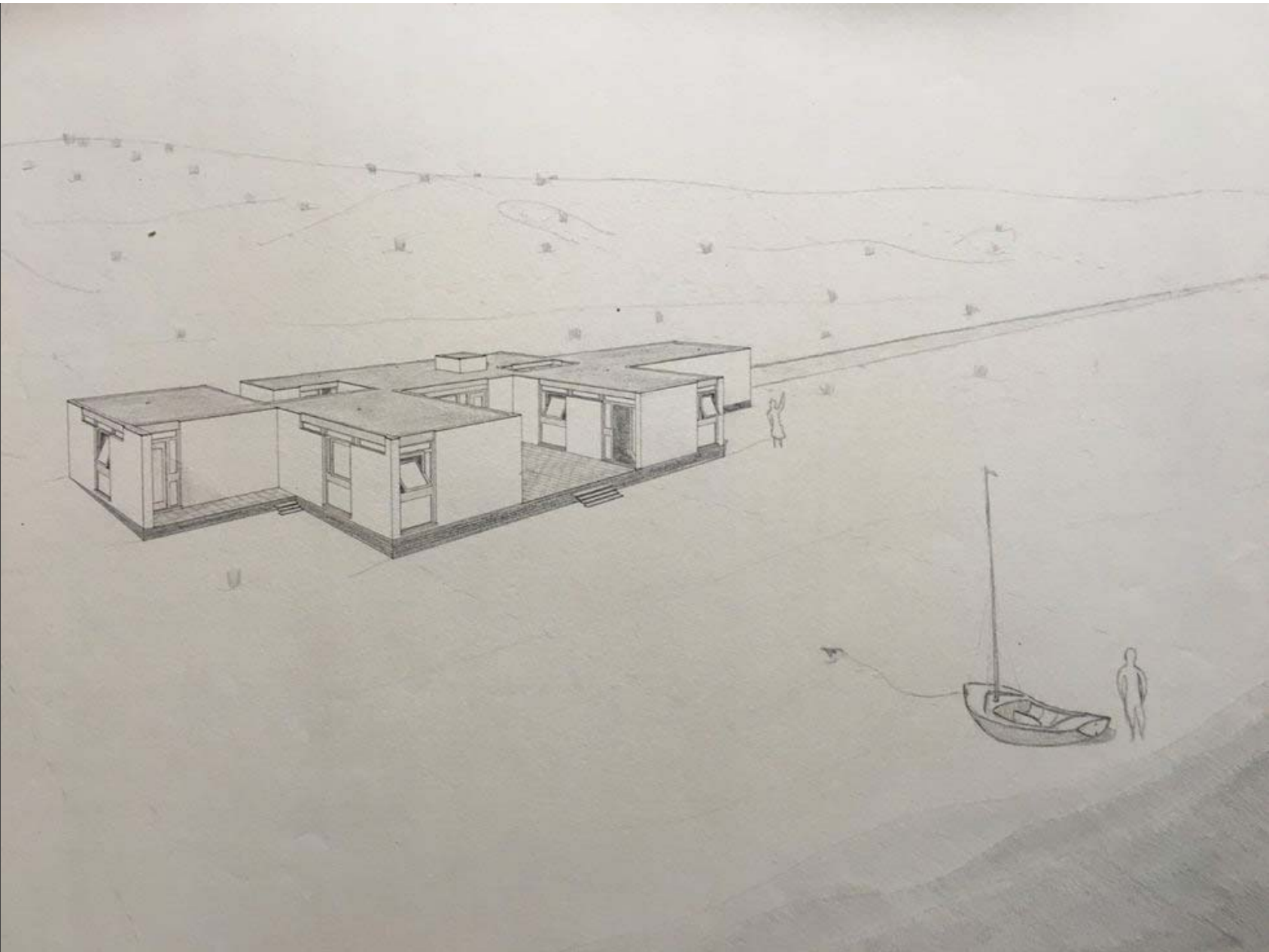
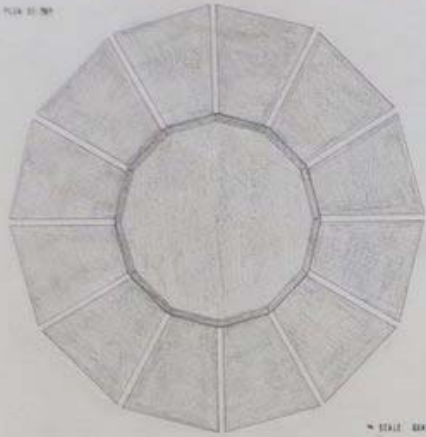


The 1950s

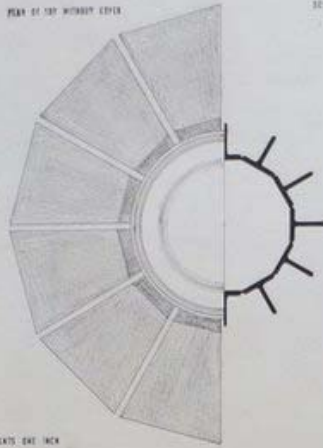
Peter Carolin 1957-60



PLAN OF TOP



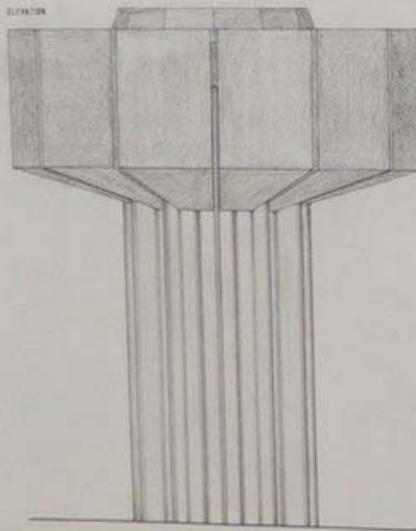
PLAN OF TOP WITHOUT LEDGE



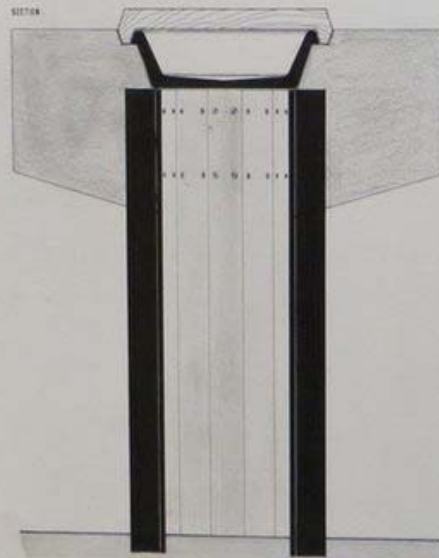
SECTION THROUGH A & I SHOW

1/4 SCALE - QUARTER OF AN INCH REPRESENTS ONE INCH

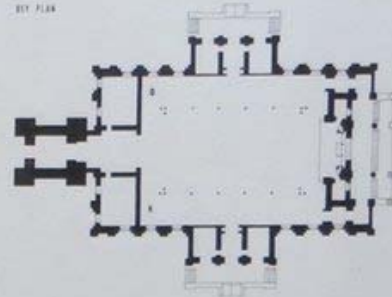
ELEVATION



SECTION



KEY PLAN



The church of St. Aliphan at Ipswich was designed by Richard Westwood in 1772, started in 1773 and completed in 1775. The interior was badly damaged in 1781 but was restored by Sir Gilbert Scott in 1855.

"The building is conceived externally as a block, but its aim is directed, not the only of High Renaissance ideals. The effect when the scaffolding was first removed must have been startling: the combination of monumentality and rhythm of pillar had never before been achieved, or attempted, in parish church architecture.

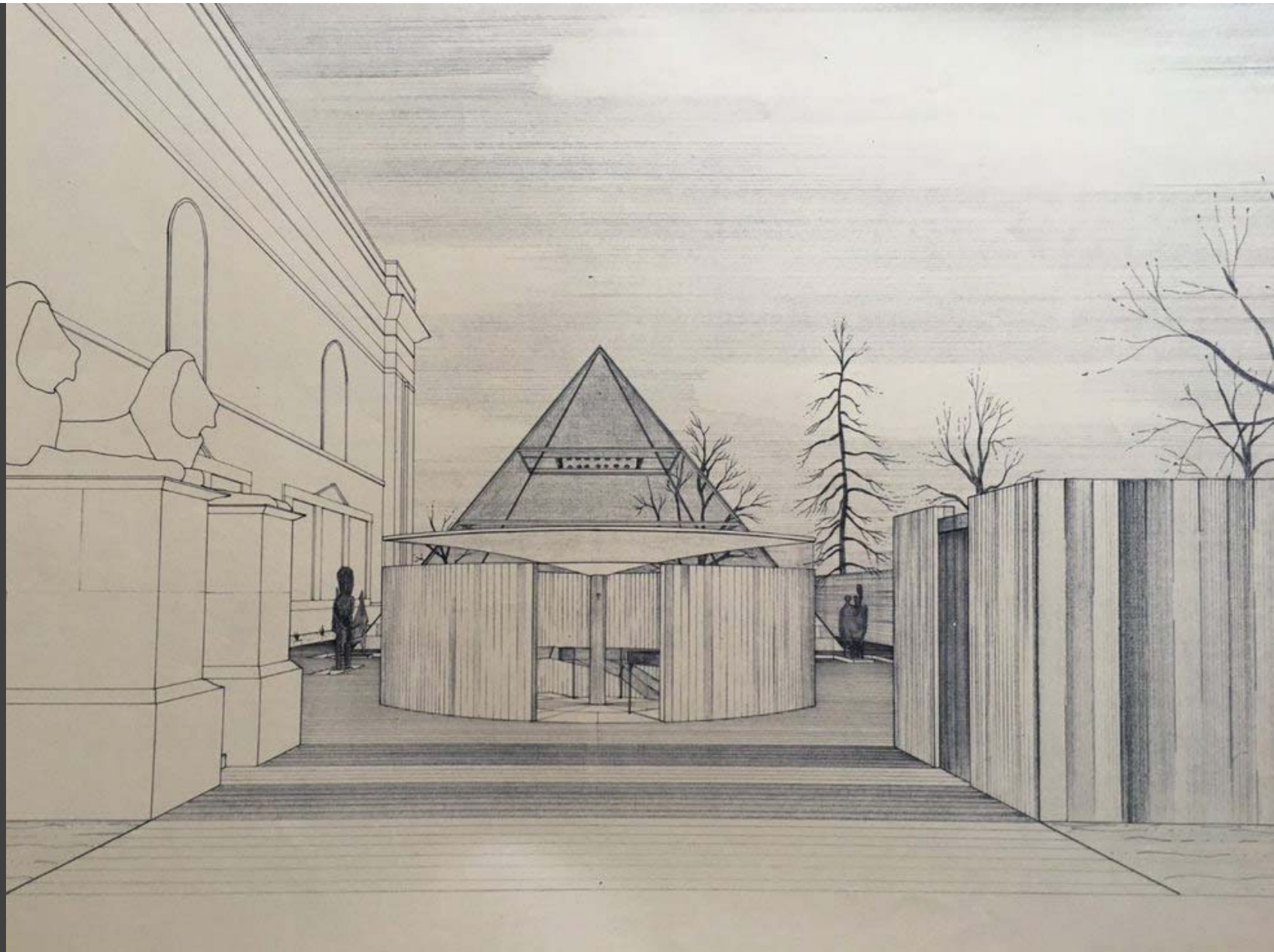
"The interior... is in light toned plaster and woodwork... it is visually simple and symmetrical, although it has been enriched by present seating arrangements. 'It has a gallery.' [The 'Restoration' by Barry Brown.]

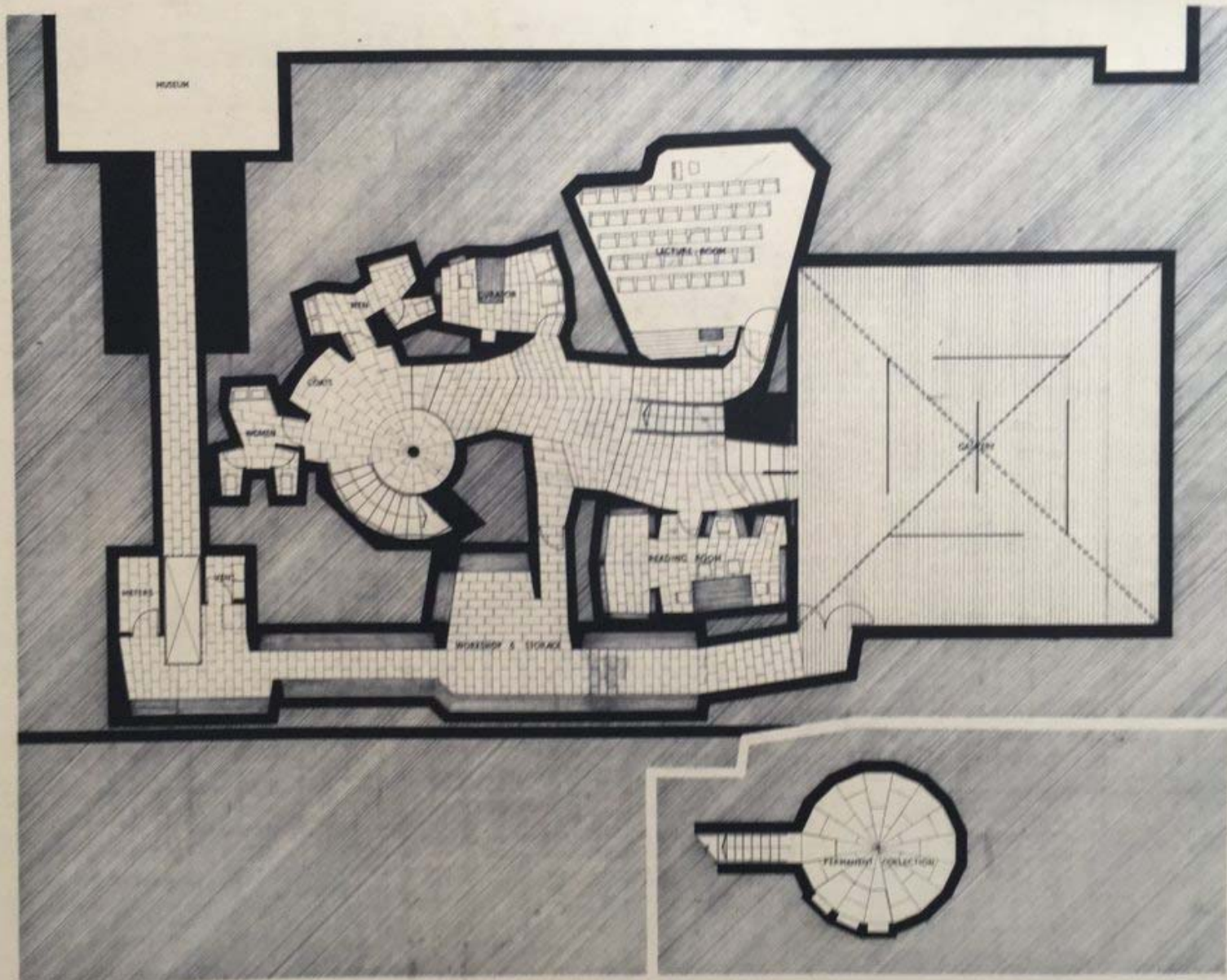
There are at present two fonts - one of which appears to be a restoration of an old stone font and another, which is proposed to replace, which looks more like a high altar. One is at the SE and the other at the SW corner of the church.

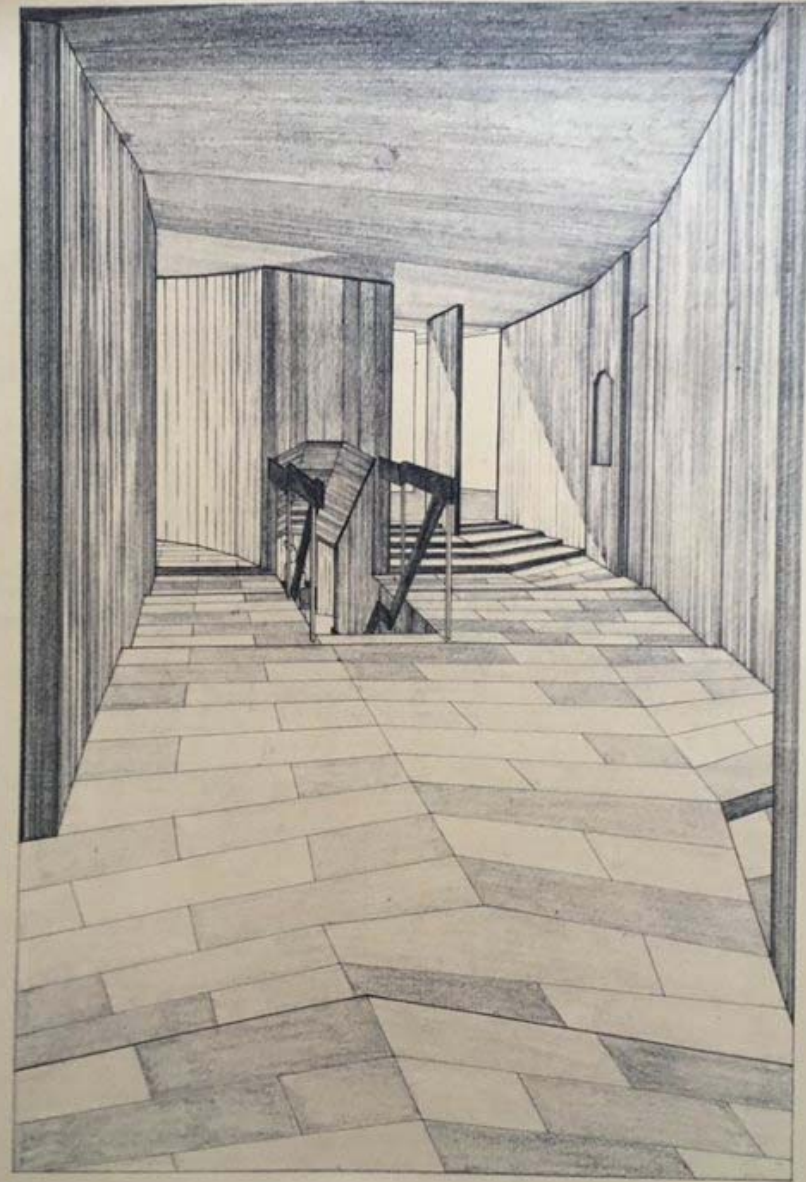
The proposed font is to be constructed from white polished Portland stone, set in a concrete base and supporting twelve red bricks. In the center of the latter is a small glass tank which is covered by an old lid. The latter has to be built as it is nearly removed by placing a finger under it through one of the gaps between the bricks.

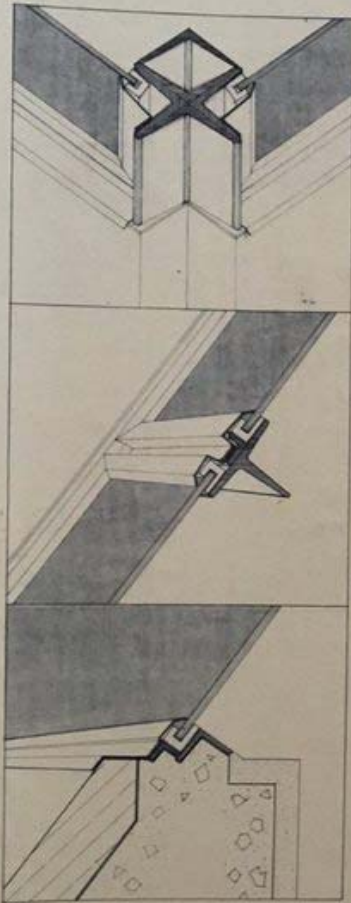
CHURCH FONT

PETER CARLIN
JANUARY 1960





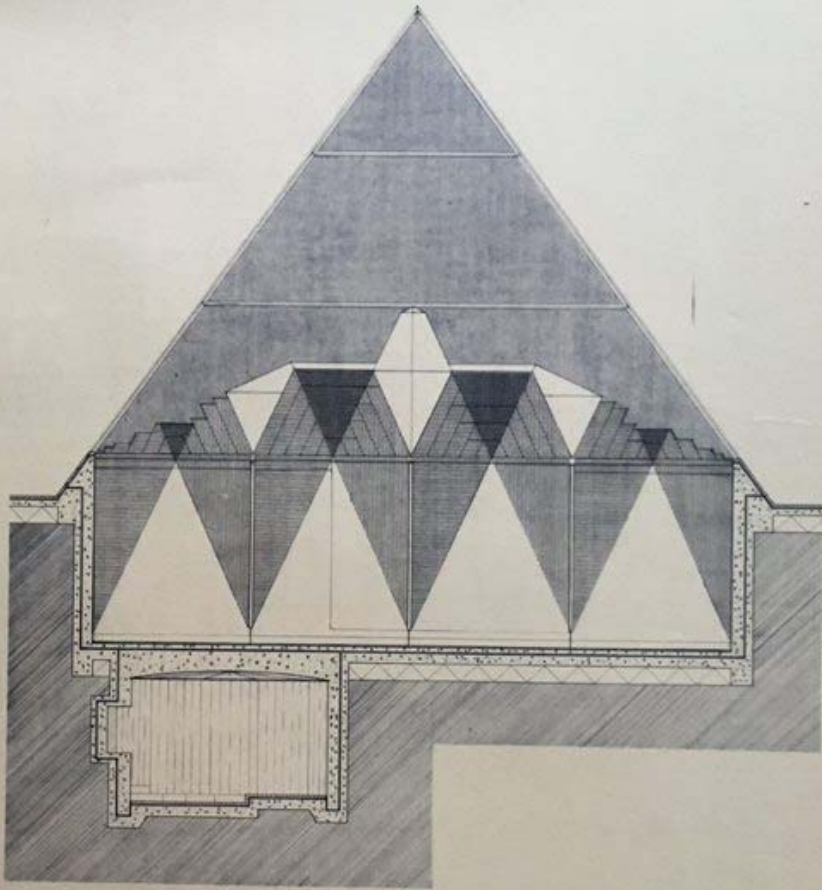




CORNER DETAIL

GLAZING BAR DETAIL

SILL DETAIL



SECTION THROUGH CENTRE OF GALLERY TO QUARTER INCH SCALE

FITZWILLIAM MUSEUM EXTENSION

LIGHTING AND CONSTRUCTIONAL DETAILS OF GALLERY

PETER CAROLIN

DECEMBER 1934